

Note: Because of varying state requirements and optional equipment, some or all of the utility locations might change per floor plan (ie: furnaces, wh, stainwell). Consult your sales representative for exact specifications.

- © = Omit shelf and water heater access wall for the state of Ohio.
- S = Std. 4" staggered cabinet/opt 12" staggered /N/A with opt. cathedral ceiling.

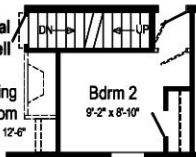
Opt. Formal Foyer



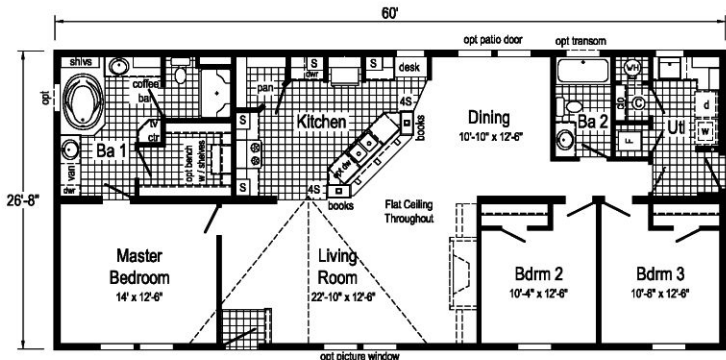
Optional Stairwell

Living Room
21'-6" x 12'-6"

Bdrn 2
9'-2" x 8'-10"



RG715-A



Optional Chef's Signature Hood
(only with flat ceiling)



Opt Double Refrigerator or Opt Freezer/Ref. Combo
(frz/ref. combo only with flat ceiling)

RG715-A 2860 Approx. 1600 Sq. Ft.



Opt 12" Box-Bay 38

Curb Side Exterior Options

Opt 27"-4" dormer w/ 12" bump-out

Oakwood