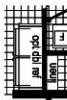


(Only with flat ceiling)

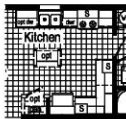


Opt Hearth
Kitchen



**Optional Chef's
Signature Hood**
(only with flat ceiling)

**Opt Double Refrigerator
or Opt Freezer/Ref. Combo**
(frz/ref. combo only with flat ceiling)
(omits pantry/opt oven)

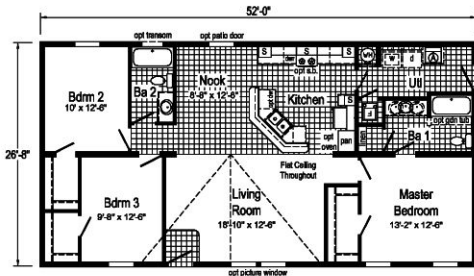


Opt. Alt. Kitchen Hickory RG701-A

Ⓐ = Opt Util Sink or Bench

S = Std. 4" staggered cabinet / opt 12" staggered
/ N/A with opt. cathedral ceiling

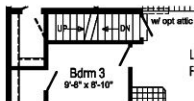
RG721-A



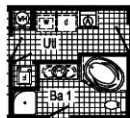
RG721-A 2852 Approx. 1387 Sq. Ft.



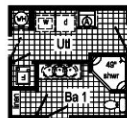
opt
opt 27'-4" dormer w/ 12" bump-out
Curb Side Exterior Options



**Optional
Stairwell**



**Optional
Glamour Bath**
(omits linen)



**Opt. Corner
Shower**

Note: Because of varying state requirements and optional equipment some or all of the utility locations might change per floor plan (ie; furnaces, wh, stairwell). Consult your sales representative for exact specifications.

Elm