

Note: Because of varying state requirements and optional equipment some or all of the utility locations might change per floor plan (i.e.; furnaces, w/h, stairwell). Consult your sales representative for exact specifications.

⊖ = Omit shelf and water heater access wall for the state of Ohio.

S = Std. 4" staggered cabinet/opt 12" staggered /N/A with cathedral ceiling.

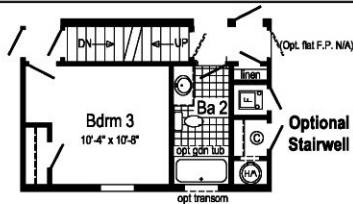
Optional Chef's Signature Hood

(only with flat ceiling)

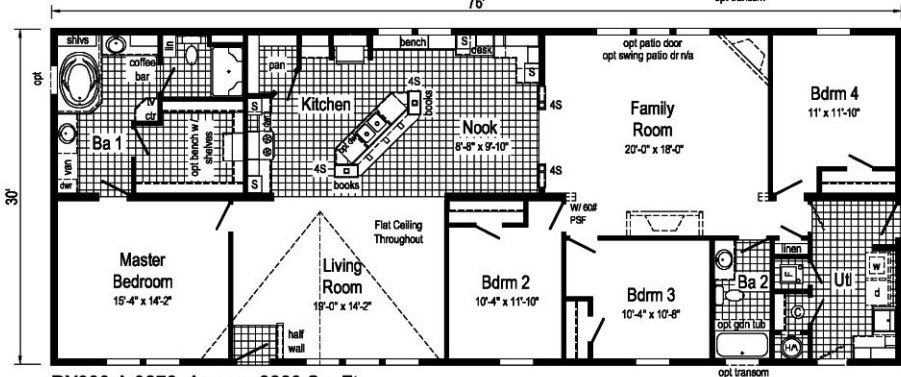


Opt Double Refrigerator or Opt Freezer/Ref. Combo

(frz/ref. combo only with flat ceiling)



76'



RX806-A 3276 Approx. 2280 Sq. Ft.



Opt. 9" box-bay 52

Curb Side Exterior Options

Opt. 27'-4" dormer w/ 9" bump-out

Pinewood