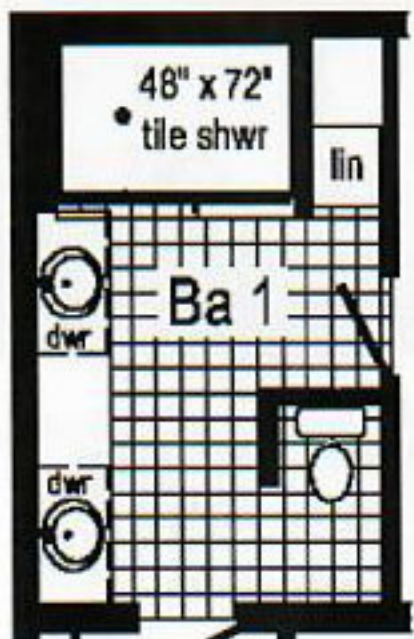


Options Pictured:

- 7/12 Roof
- 27'-4" Twin Peak Dormer with Bumpout
- 10' Dormer
- Round Top Front Door
- Vertical Siding
- Coastal Shores Red Siding

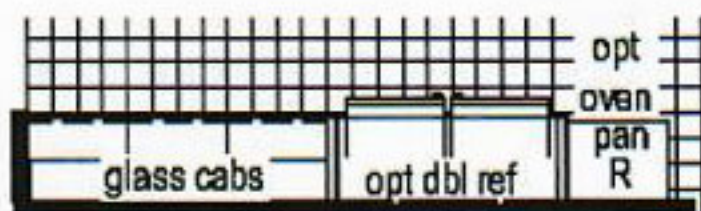


**Optional
4'x6' Walk-In
Tile Shower**



**Optional Chef's
Signature Hood**

(only with flat ceiling)



**Opt Double Refrigerator
or Opt Freezer/Ref. Combo**

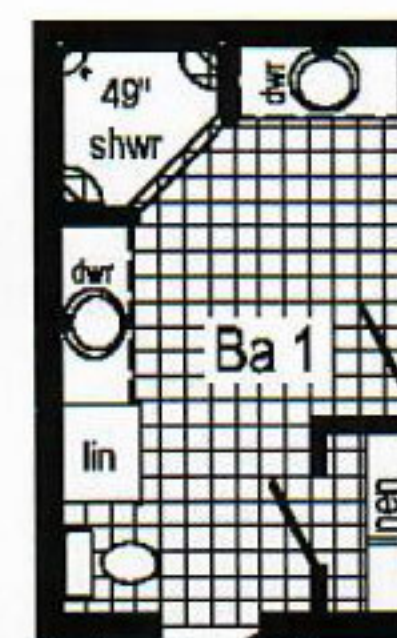
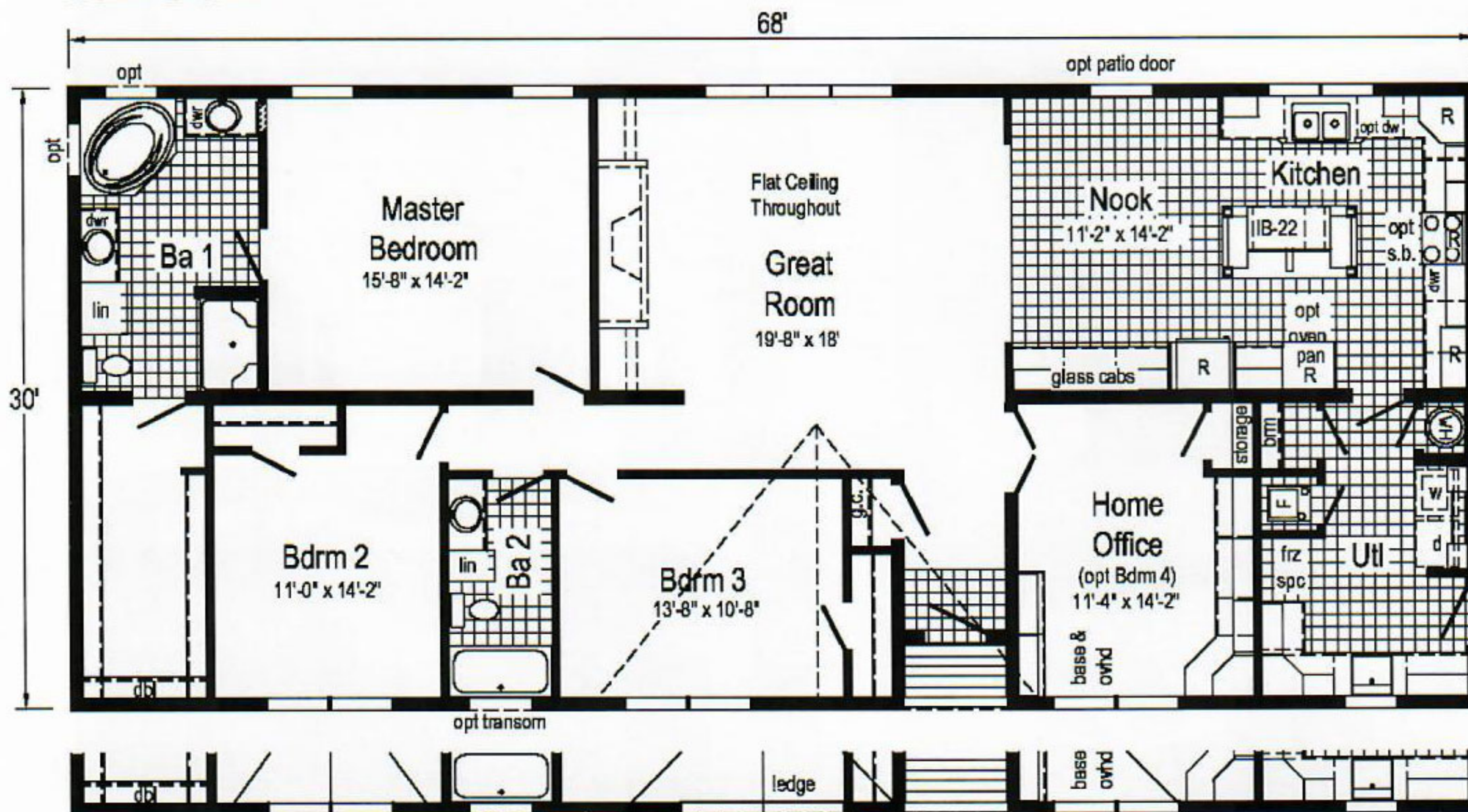
(frz/ref. combo only with flat ceiling)



Optional Attic Stairs



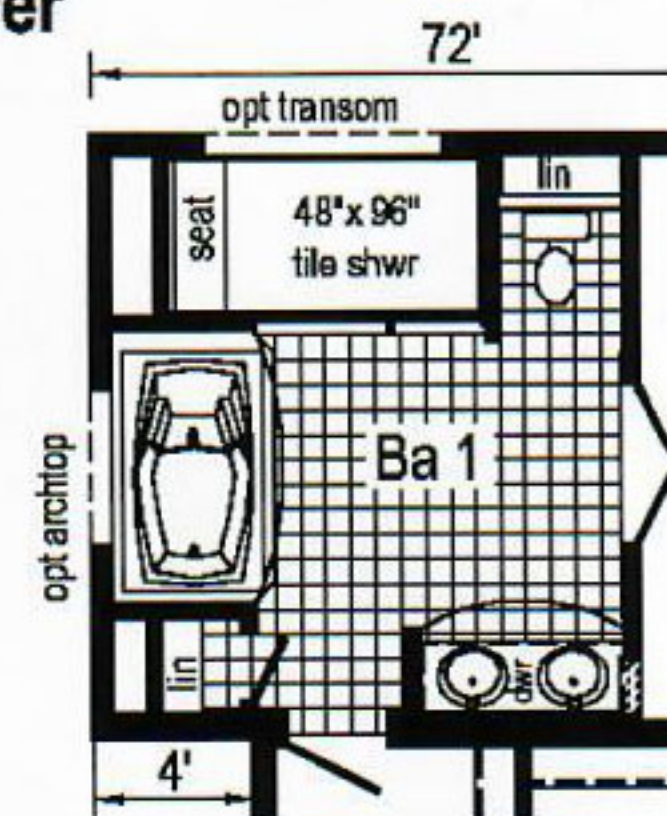
Optional Stairwell



**Opt. Corner
Shower**



Optional Bedroom 4



**Optional Tranquility
Bath**

Opt 10' dormer

opt transom

Opt 27'-4" dormer w/ 9" bump-out

Curb Side Exterior Options

R = Std. 12" staggered cabinets.
N/A opt opt. cathedral ceiling.