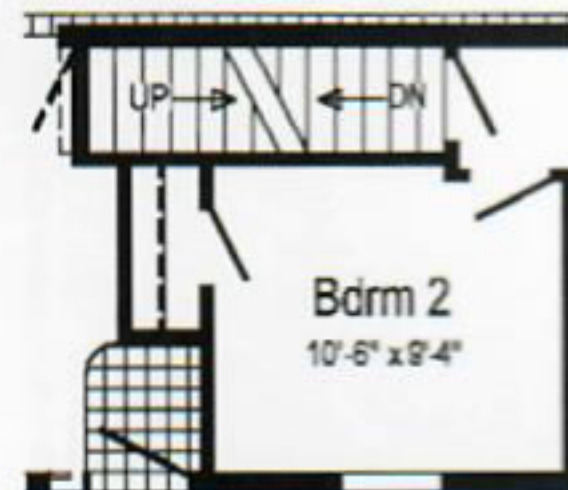
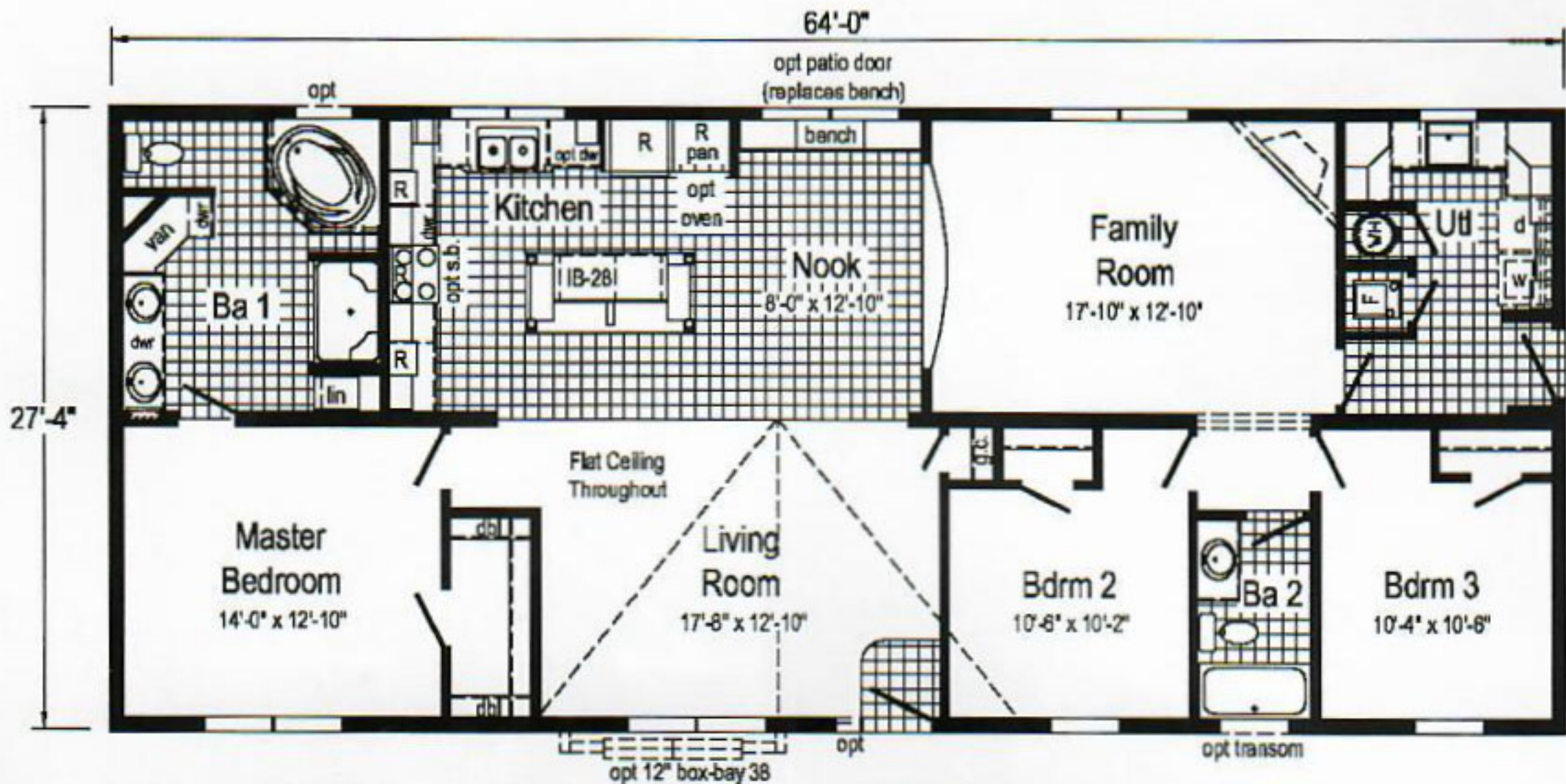


**Optional Clearview Entertainment Wall**  
opt. patio door at nook required with this option

# Arlington III (167A)

2868 - Approx 1813 Sq. Ft.



**Optional Stairwell**  
(omits g.c., reduces LR to 15'-2" wide)



R = Std 12" staggered cabinets w/ flat ceiling,  
N/A with opt. cathedral ceiling.

opt 27'-4" dormer w/ 12" bump-out

## Curb Side Exterior Options