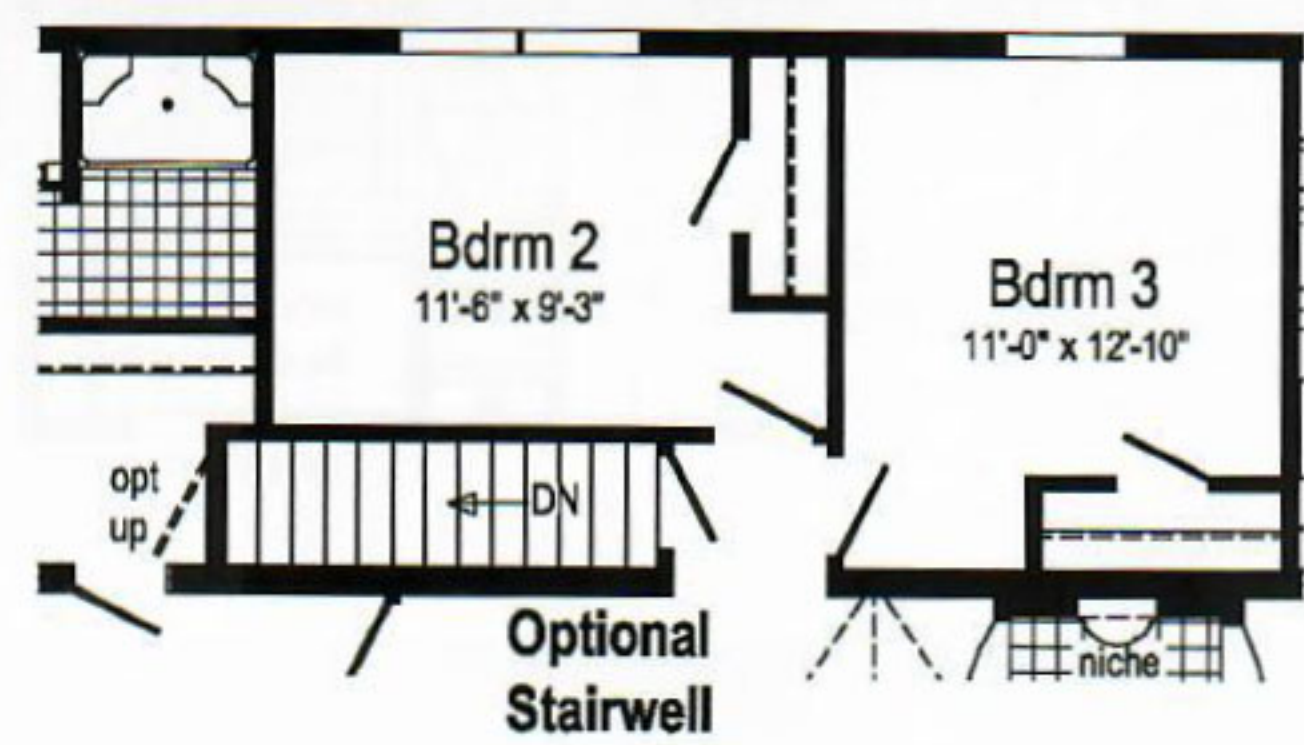
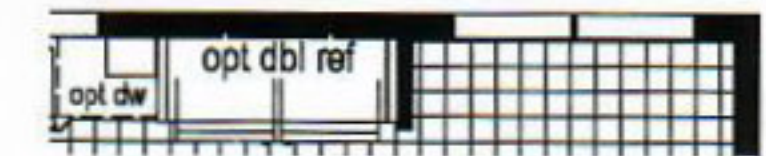


Options Pictured:

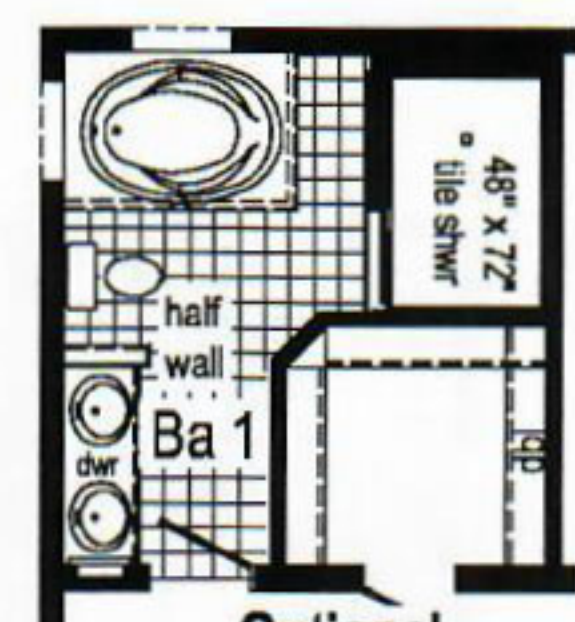
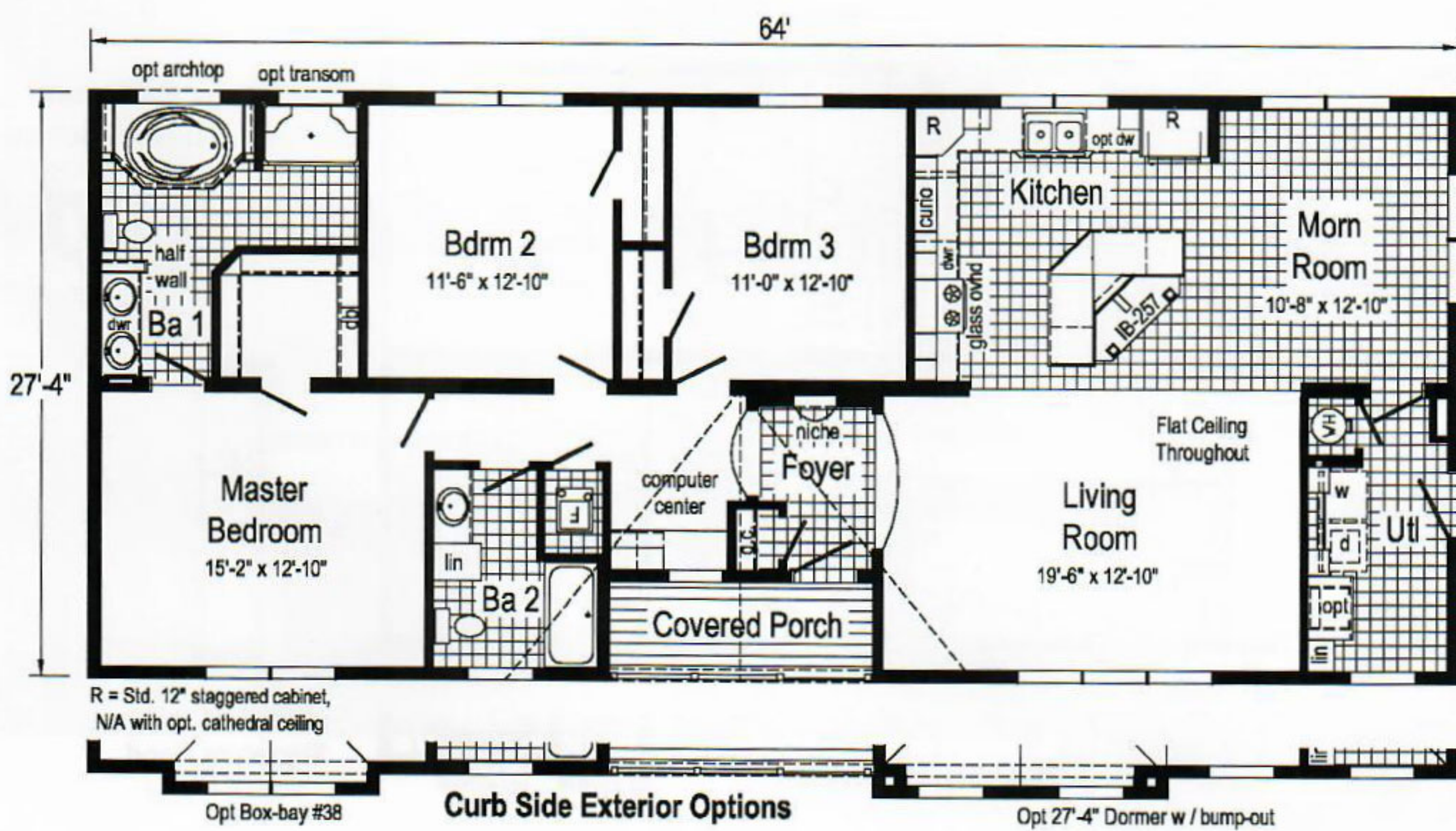
- 9/12 Roof
- 6' Cape Dormer with Window
- Full Oval Front Door
- 27'-4" Twin Peak Dormer & Window with Bumpout
- Box Bay 38
- Vertical/Shake Siding
- Clay Package



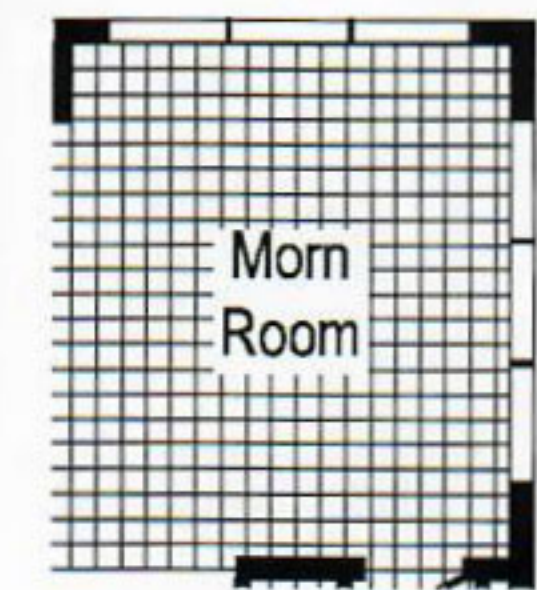
Optional Chef's Signature Hood
(only with flat ceiling)



Opt Double Refrigerator or Opt Freezer/Ref. Combo
(frz/ref. combo only with flat ceiling)
(n/a w/ opt triple mullied window appl)



Optional 4'x6' Walk-In Tile Shower



Optional Triple Mullied Windows

R = Std. 12" staggered cabinet, N/A with opt. cathedral ceiling