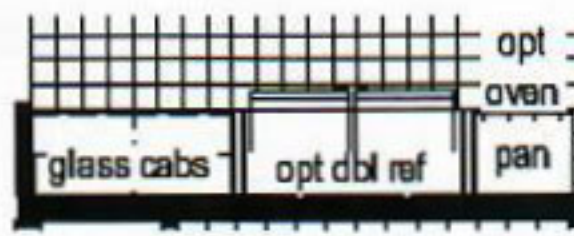


Options Pictured:

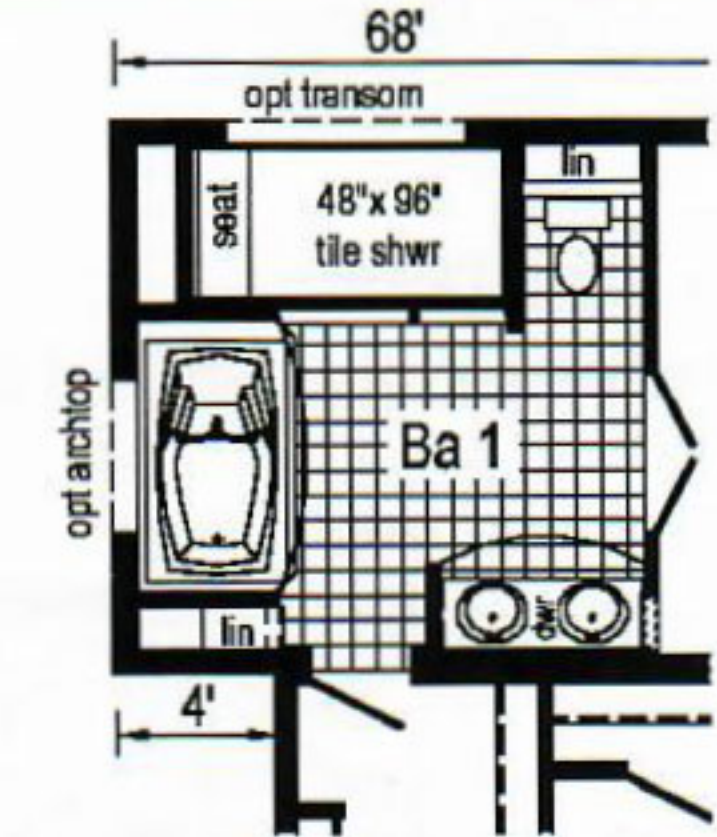
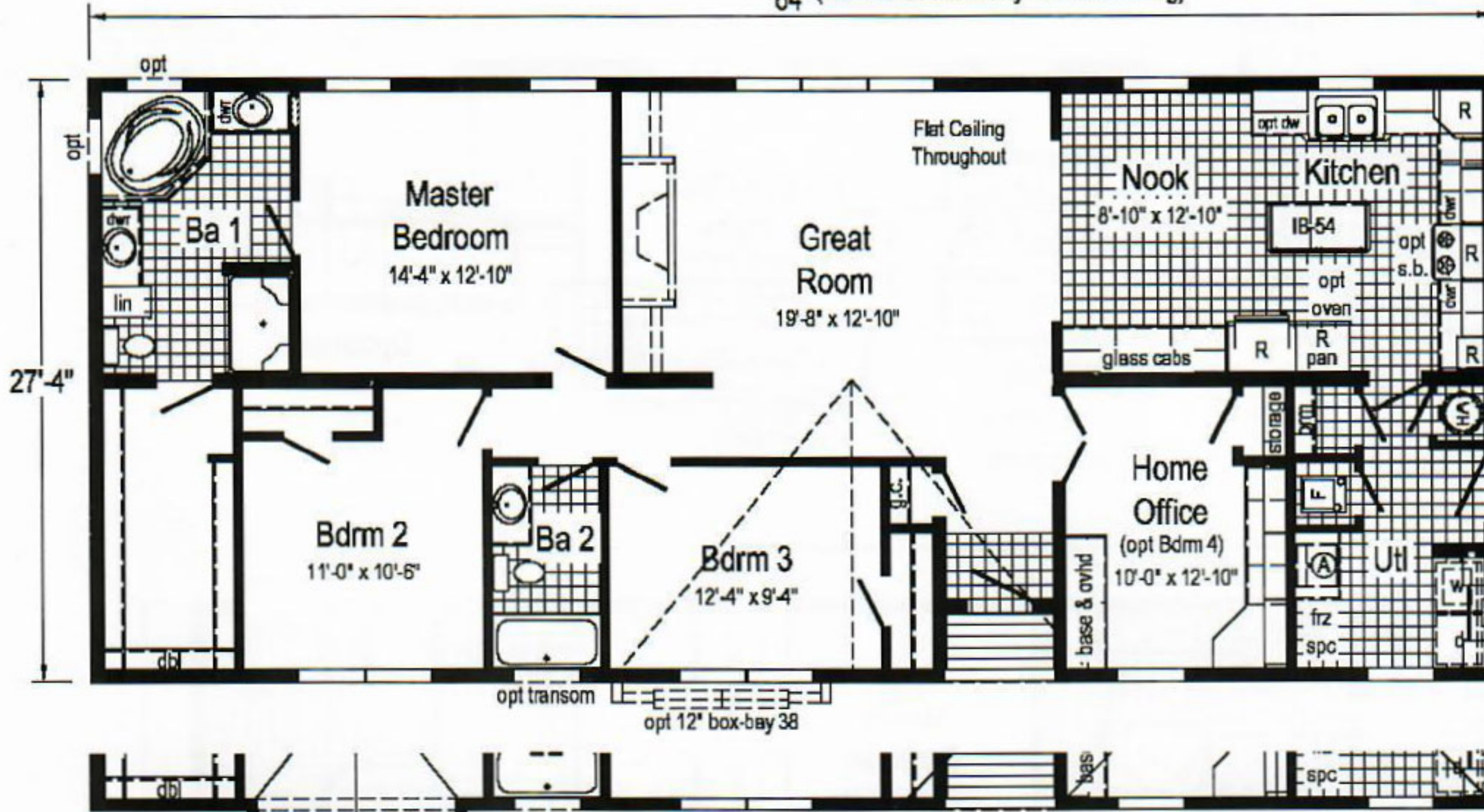
- 7/12 Roof
- Round Top Front Door
- 27'-4" Twin Peak Dormer with Full Eave
- 10' Dormer
- Box Bay 38

- Vertical Siding
- Shake Accent

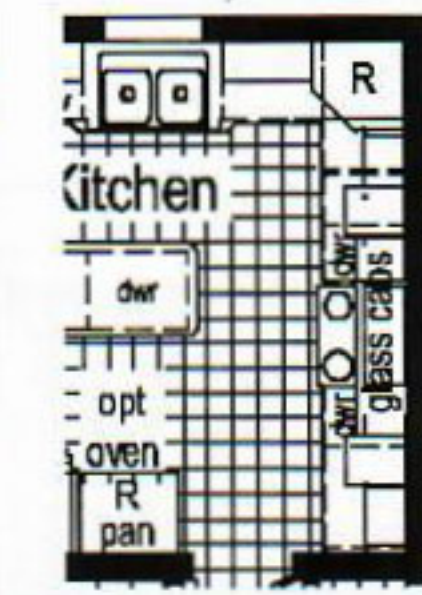
Visit our website for more photos of this home.
www.commodore-indiana.com



**Opt Double Refrigerator
or Opt Freezer/Ref. Combo**
64" (frz/ref. combo only with flat ceiling)



Optional Tranquility Bath



Opt. Millennia Kitchen

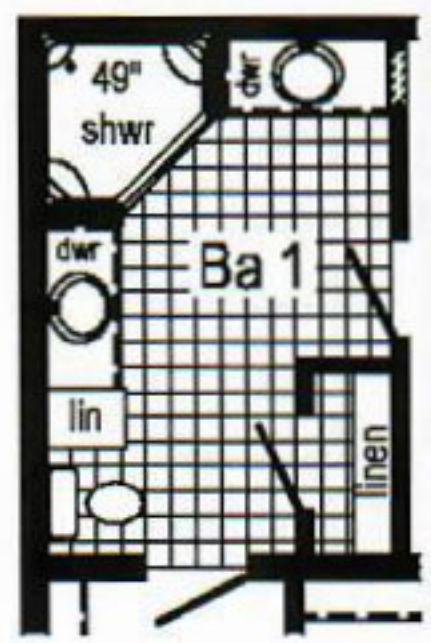


Optional Chef's Signature Hood
(only with flat ceiling)

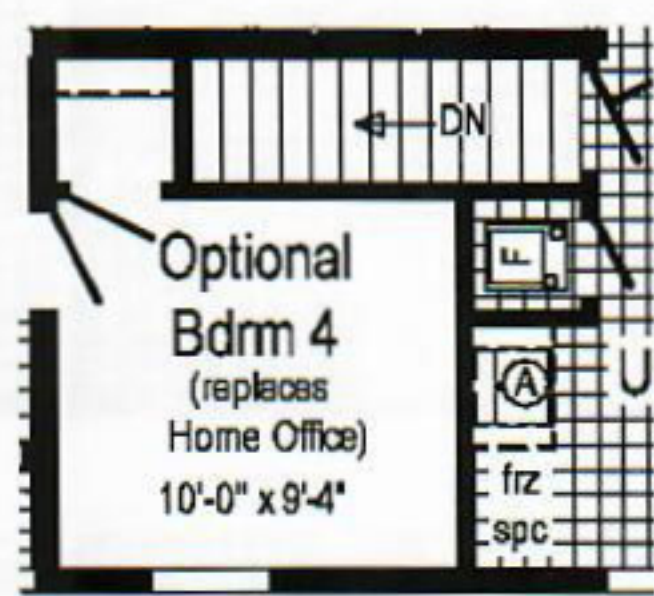
Curb Side Exterior Options

opt 12" box-bay #38 opt 27'-4" twin-peak dormer

R = Std 12" staggered overhead w/ flat ceiling, N/A with opt. cathedral ceiling. (A) = Std frz spc, opt utl sink, pet shwr or bench.



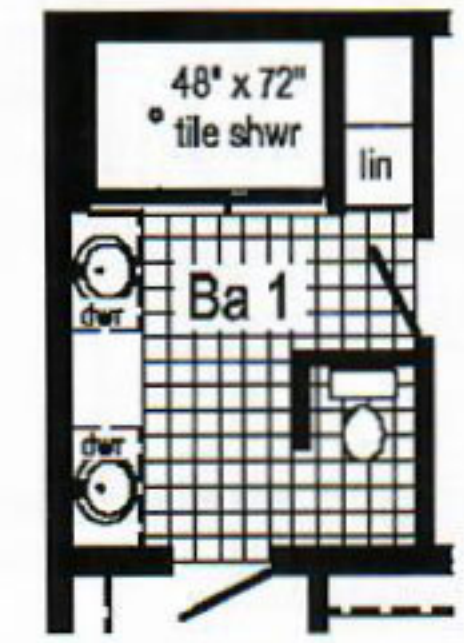
Opt. Corner Shower



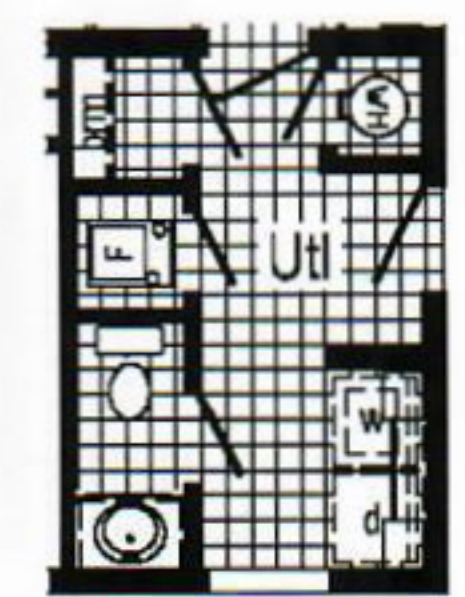
Optional Stairwell
For Home Office Or Opt Bdrm 4 (omits brm)



Optional Attic Stairs
Not Available w/ Opt Bdrm 4 (omits storage)



Optional 4'x6' Walk-In Tile Shower



Optional 1/2 Bath
(omits frz spc & opt "A")