



Options Pictured:
 - Round Top Front Door
 Discontinued - See
 Page 4 for Selections
 - Vertical Siding

Additional Options Built
 On-Site by Others

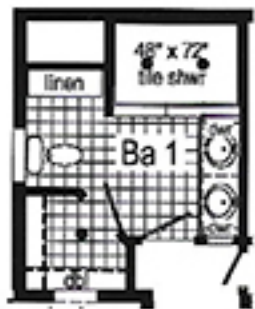
Brookside

Model: 187A 2876/64

Square Feet: 1900

Bedrooms: 3

Bathrooms: 2



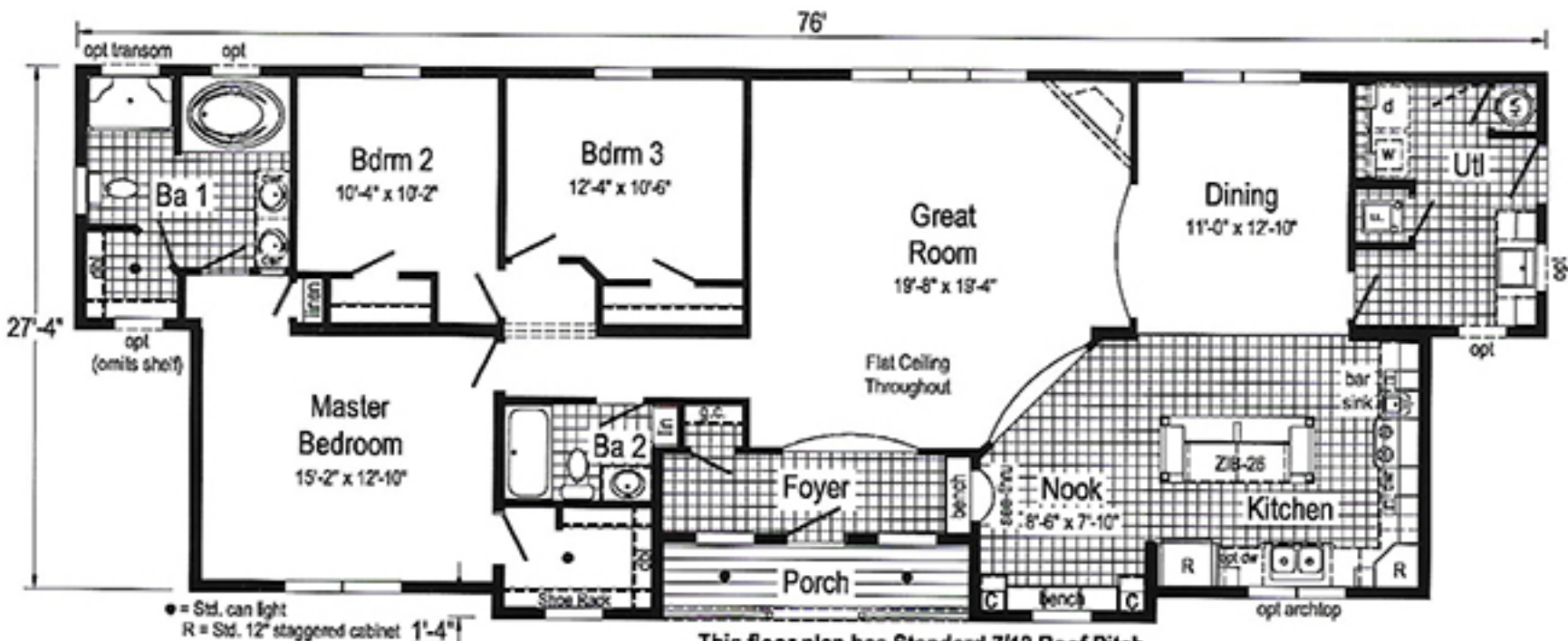
**Optional
 4'x6' Walk-In
 Tile Shower**



**Optional
 Stairwell**



**Optional Chef's
 Signature Hood**
 (only with flat ceiling)
 (omits bar sink)



This floor plan has Standard 7/12 Roof Pitch.
 This floor plan N/A w/Opt Cathedral Ceiling