



- Options Pictured:**
- 7/12 Roof
 - Round Top Front Door
 - Discontinued - See Page 4 for Selections
 - 27'-4" Twin Peak
 - Dormer with Full Eave
 - 10' Dormer
 - Box Bay 38
 - Vertical Siding
 - Shake Siding Accent

Additional Options Built On-Site by Others

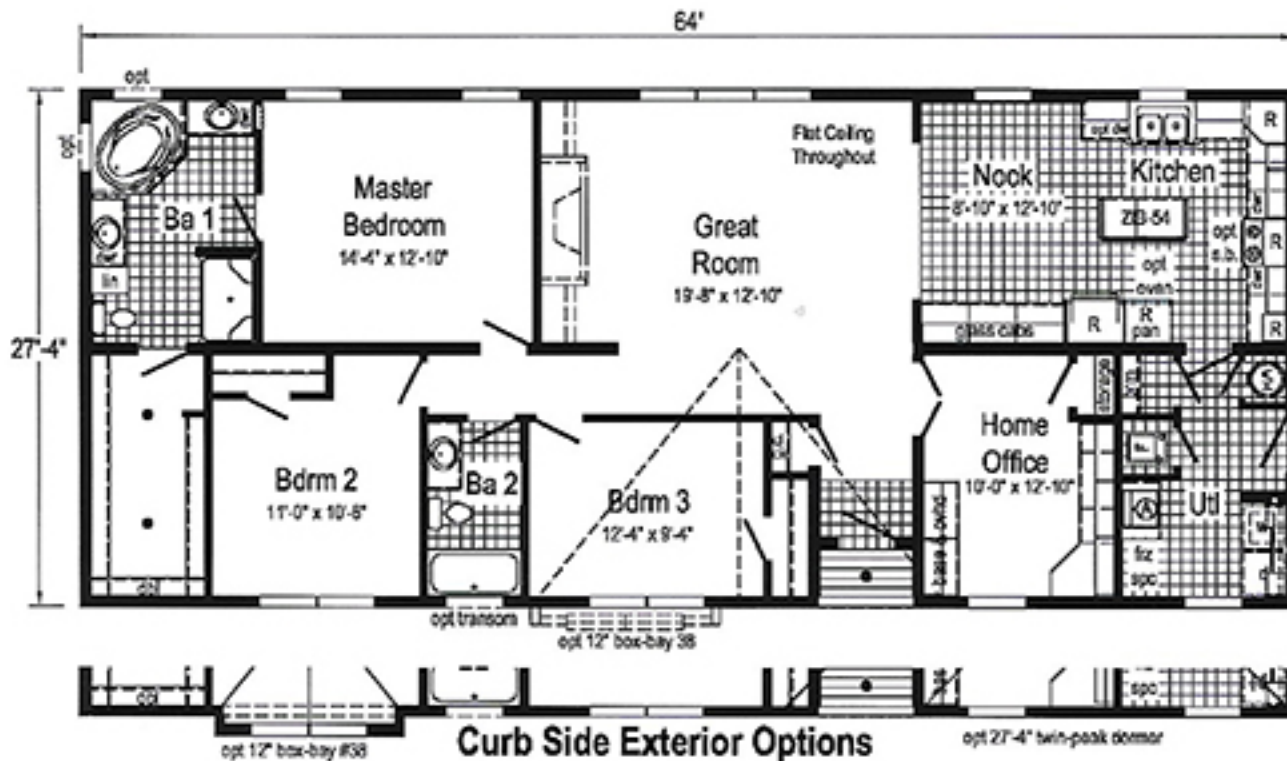
Lafayette

Model: 164A 2864

Square Feet: 1749

Bedrooms: 3

Bathrooms: 2

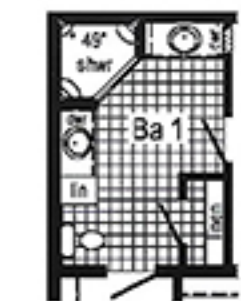


Curb Side Exterior Options



● = Std. can light
 R = Std 12" staggered overhead w/ flat ceiling,
 N/A with opt. cathedral ceiling.

Ⓐ = Std frz spc, opt util sink,
 pet shwr or bench.



Opt. Corner Shower



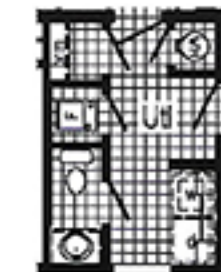
Optional Stairwell



Optional Attic Stairs



Opt Freezer/Ref. Combo
 (frz/ref. combo only with flat ceiling)



Optional 1/2 Bath
 (omits frz spc & opt "A")



Optional 4'x6' Walk-In Tile Shower