



Additional Options Built On-Site by Others

One home design that can be built multiple ways. This popular floorplan provides the customization in the square footage you need.

Options Pictured:

- Round Top Front Door
- Vertical Siding
- Discontinued - See Page 31 for Selections
- 27'-4" Twin Peak Dormer
- Shake Siding

- 1st - Choose a Floorplan
- 2nd - Choose a Kitchen Option
- 3rd - Choose a Master Bath Option

Kitchen Options



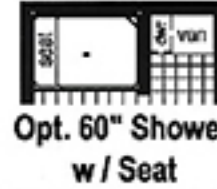
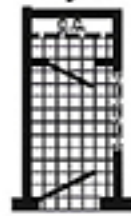
Opt Freezer/Ref. Combo
(frz/ref. combo only with flat ceiling)



Optional Chef's Signature Hood
(only with flat ceiling)

Foyer Option

Opt. Formal Foyer

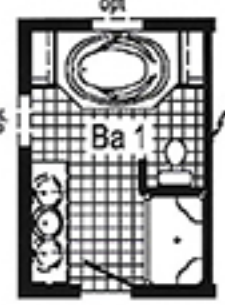


Opt. 60" Shower w/ Seat

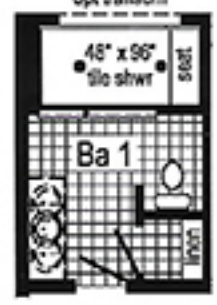


Opt. Corner Shower

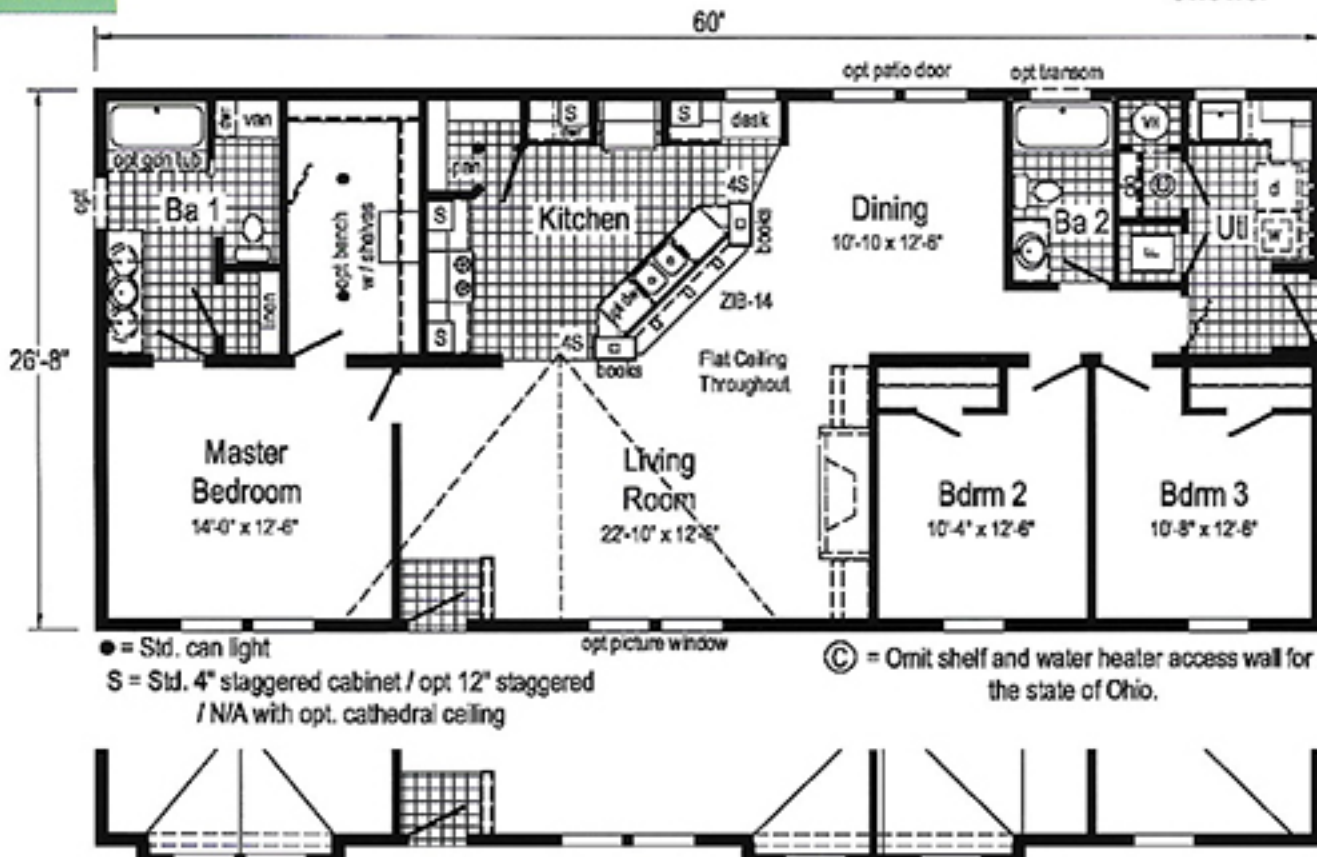
Master Bath Options



Optional Glamour Bath w/ Soaker Tub



Optional Tranquility Shower



● = Std. can light
 S = Std. 4" staggered cabinet / opt 12" staggered / N/A with opt. cathedral ceiling
 © = Omit shelf and water heater access wall for the state of Ohio.

Cypress 1 (714A)

2860 - Approx 1600 Sq. Ft.



Opt 12" Box-Bay 38

Curb Side Exterior Options

Opt 27'-4" dormer w/ 12" bump-out

Commodore Homes of Indiana