

Mulberry 2 (838A)

3260 - Approx 1800 Sq. Ft.



Opt Freezer/Ref. Combo

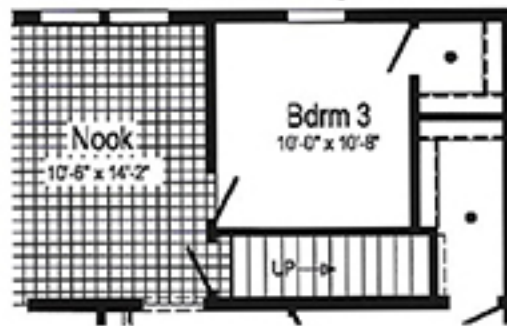
(frz/ref. combo only with flat ceiling)
(omits pantry's)

Optional Glamour Bath



Optional 4'x6' Walk-In Tile Shower

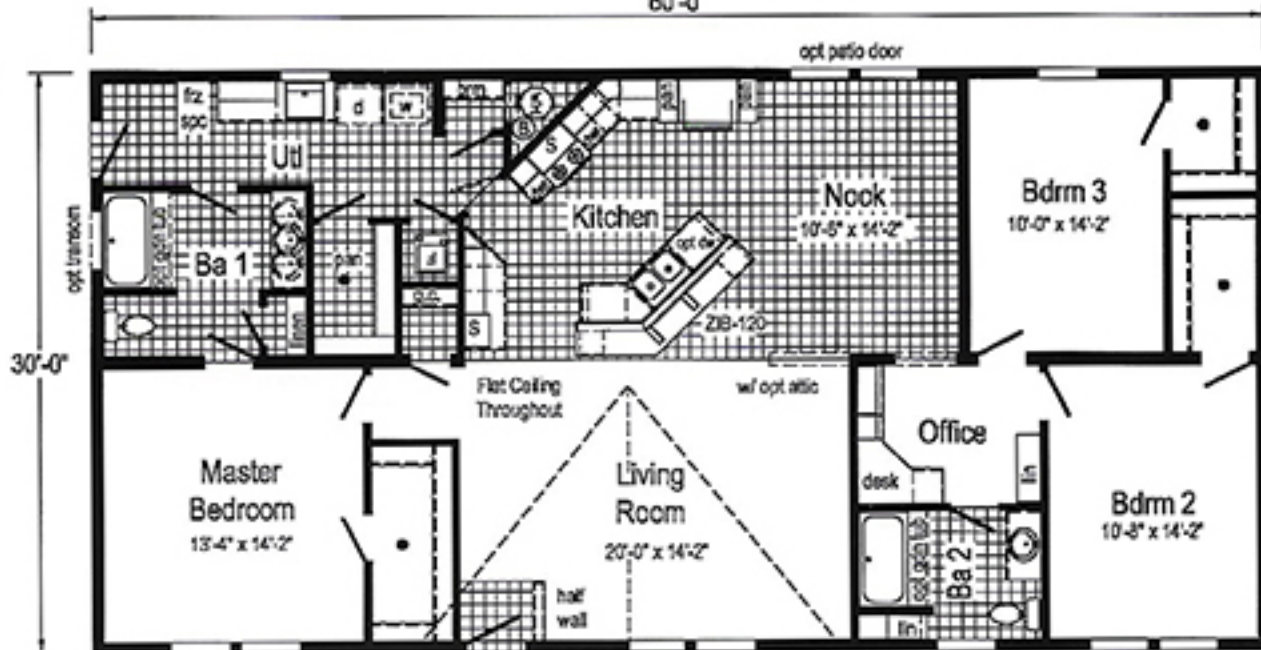
Optional Attic Stairs



Optional Stairwell

60'-0"

30'-0"



ⓑ = Water heater cavity must be altered, relocated or omitted for the state of Ohio.

opt picture window

● = Std. can light

S = Std. 4" staggered cabinet/opt 12" staggered / N/A with opt. cathedral ceiling

Curb Side Exterior Options

opt 27'-4" dormer w/ 9" bump-out

